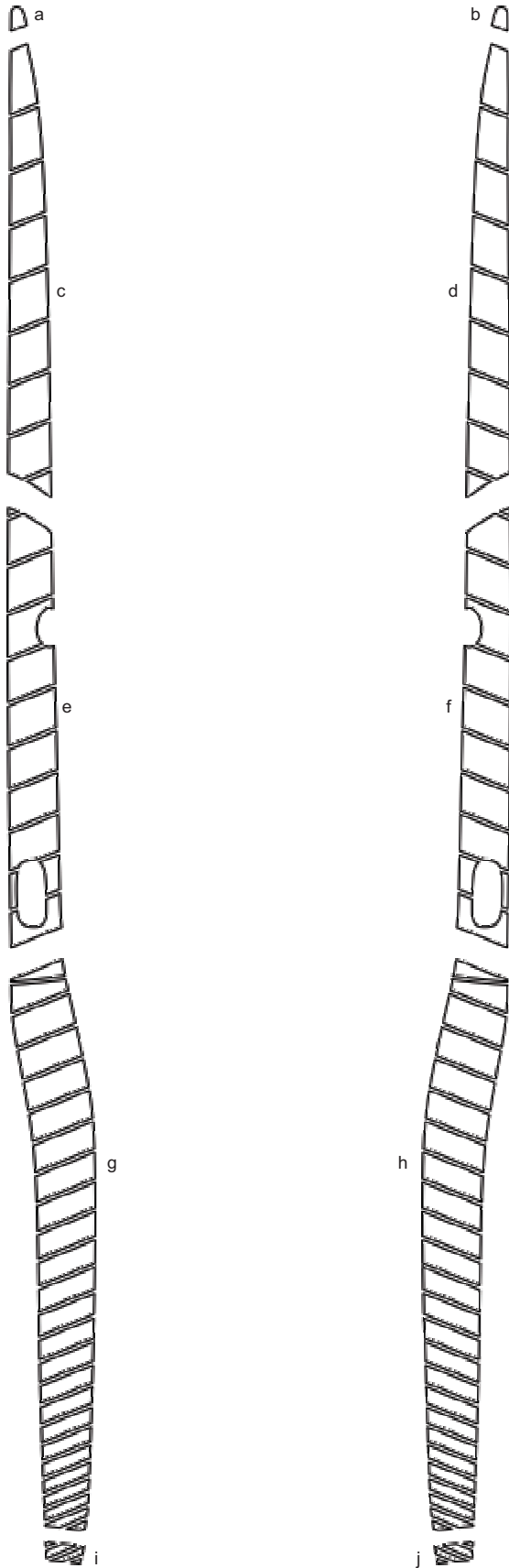


DODGE CHALLENGER

Dodge Challenger 'Cuda Style Body Side
Strobe Graphic Kit 1 - Parts List
ATD-DDGECLGRGRPH046



Part Number	Item	Cost
ATD-DDGECLGRGRPH046a	Front Header Left	\$7.95
ATD-DDGECLGRGRPH046b	Front Header Right	\$7.95
ATD-DDGECLGRGRPH046c	Front Fender Left	\$59.95
ATD-DDGECLGRGRPH046d	Front Fender Right	\$59.95
ATD-DDGECLGRGRPH046e	Door Left	\$59.95
ATD-DDGECLGRGRPH046f	Door Right	\$59.95
ATD-DDGECLGRGRPH046g	Rear Quarter Left	\$74.95
ATD-DDGECLGRGRPH046h	Rear Quarter Right	\$74.95
ATD-DDGECLGRGRPH046i	Rear Bumper Left	\$9.95
ATD-DDGECLGRGRPH046j	Rear Bumper Right	\$9.95

Note: Spacing of Stripes as shown shall be performed at time of installation. Kit does not come pre-spaced.
Stripe kit is set to be installed approximately 0.25" (6.35mm) above the Challenger's distinct body side line. We suggest fitting the Door pieces first followed by the Front pieces.

Auto Trim DESIGN®

autotrimdesign.com